

Product specifications

SpinChem® Cartridge kit B1 for S2

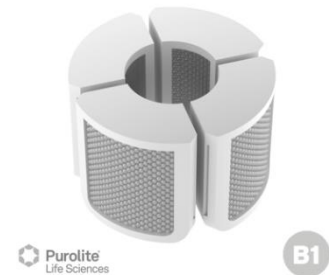
4221-210

Purolite® Lifetech™ CalB immo screening kit

For SpinChem® RBR S2

Cartridge properties

- Material:** Polyamide (PA)
- Height:** 28 mm
- Filter:** 44 µm
- Volume:** ~8 mL total of each resin
- Quantity:** 4 cartridges per resin
- Storage:** Refrigerated



Resins

- CalB immo 8285:** Epoxy/butyl methacrylate, 100-710 µm, with Lipase from *Candida antarctica* B covalently immobilized
B11
- CalB immo 8806:** Octadecyl methacrylate, 300-710 µm, with Lipase from *Candida antarctica* B immobilized by adsorption
B12
- CalB immo 1090:** Styrene/DVB macroporous, 300-710 µm, with Lipase from *Candida antarctica* B immobilized by adsorption
B13
- CalB immo 5587:** Styrene/DVB macroporous, 300-710 µm, with Lipase from *Candida antarctica* B immobilized by adsorption
B14
- CalB immo 5872:** Styrene/DVB macroporous, 300-710 µm, with Lipase from *Candida antarctica* B immobilized by adsorption
B15
- CalB immo Plus™:** DVB/methacrylate macroporous, 300-710 µm, with Lipase from *Candida antarctica* B immobilized by adsorption
B16

Material safety data sheets (MSDS) available for download at:
www.spinchem.com/product/4221-210