

Product specifications

SpinChem® Cartridge kit B2 for S2

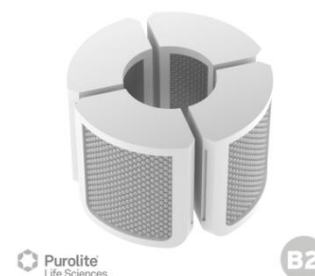
4221-220

Purolite® Lifetech™ Lipase immo screening kit

For SpinChem® RBR S2

Cartridge properties

- Material:** Polyamide (PA)
- Height:** 28 mm
- Filter:** 44 µm
- Volume:** ~8 mL total of each resin
- Quantity:** 4 cartridges per resin
- Storage:** Refrigerated



Resins

CalB immo Plus™: DVB/methacrylate macroporous, 300-710 µm, with Lipase from *Candida antarctica* B immobilized by adsorption

B16

CalA immo: DVB/methacrylate macroporous, 300-710 µm, with Lipase from *Candida antarctica* A immobilized by adsorption

B21

TL immo: DVB/methacrylate macroporous, 300-710 µm, with Lipase from *Thermomyces lanuginosa* immobilized covalently

B22

RM immo: DVB/methacrylate macroporous, 300-710 µm, with Lipase from *Rhizomucor miehei* immobilized by adsorption

B23

CR immo: DVB/methacrylate macroporous, 300-710 µm, with Lipase from *Candida rugosa* immobilized by adsorption

B24

PS immo: DVB/methacrylate macroporous, 300-710 µm, with Lipase from *Pseudomonas cepacia* immobilized by adsorption

B25

Material safety data sheets (MSDS) available for download at:
www.spinchem.com/product/4221-220