

Product specifications

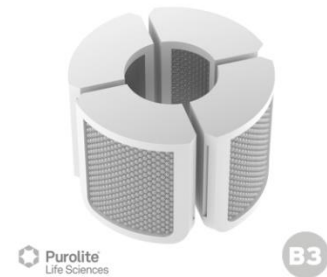
SpinChem® Cartridge kit B3 for S2 Purolite® Lifetech™ ECR screening kit

4221-230

For SpinChem® RBR S2

Cartridge properties

- Material:** Polyamide (PA)
- Height:** 28 mm
- Filter:** 44 µm
- Volume:** ~8 mL total of each resin
- Quantity:** 4 cartridges per resin
- Storage:** Refrigerated



Resins

- ECR8204F:** Epoxy methacrylate macroporous, 150-300 µm,
pore size 300-600 Å
stable pH range 5-9
- ECR8309F:** Amino methacrylate macroporous, 150-300 µm,
pore size 600-1200 Å
stable pH range 5-9
- ECR8285:** Epoxy/butyl methacrylate macroporous, 100-710 µm,
pore size 400-600 Å
stable pH range 5-9
- ECR8806F:** Octadecyl methacrylate macroporous, 150-300 µm,
pore size 500-700 Å
stable pH range 2-10
- ECR1090M:** Polystyrenic macroporous, 300-710 µm,
pore size 900-1100 Å
stable pH range 1-14
- ECR1030M:** DVB/methacrylate macroporous, 300-710 µm,
pore size 220-340 Å
stable pH range 1-14

Material safety data sheets (MSDS) available for download at:
www.spinchem.com/product/4221-230