

## Product specifications

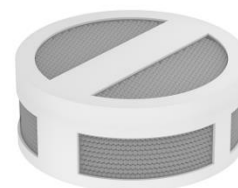
SpinChem® MagRBR M10 kit B2

5101-220

### Purolite® Lifetech™ Lipase immo screening kit

#### MagRBR properties

**Material:** Polyamide (PA)  
**Height:** 7.3 mm  
**Diameter:** 18 mm  
**Filter:** 44 µm  
**Volume:** ~0.5 mL of each resin  
**Storage:** Refrigerated




 Purolite  
Life Sciences


**B2**

#### Operating conditions


**Rotational speed:** 300 to 1200 rpm  
**Liquid volume:** 5 to 100 mL

#### Resins


**CalB immo Plus™:** DVB/methacrylate macroporous, 300-710 µm,  
 with Lipase from *Candida antarctica* B  
immobilized by adsorption

**CalA immo:** DVB/methacrylate macroporous, 300-710 µm,  
 with Lipase from *Candida antarctica* A  
immobilized by adsorption

**TL immo:** DVB/methacrylate macroporous, 300-710 µm,  
 with Lipase from *Thermomyces lanuginosa*  
immobilized covalently

**RM immo:** DVB/methacrylate macroporous, 300-710 µm,  
 with Lipase from *Rhizomucor miehei*  
immobilized by adsorption

**CR immo:** DVB/methacrylate macroporous, 300-710 µm,  
 with Lipase from *Candida rugosa*  
immobilized by adsorption

**PS immo:** DVB/methacrylate macroporous, 300-710 µm,  
 with Lipase from *Pseudomonas cepacia*  
immobilized by adsorption

Material safety data sheets (MSDS) available for download at:  
[www.spinchem.com/product/5101-220](http://www.spinchem.com/product/5101-220)