



MagRBR

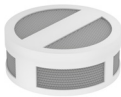
Assembly Guide &
Operating Instructions



Index

1. **MagRBR Operational Instructions** p. 3-7
2. **Specifications** p. 8-14
 - a) MagRBR p. 8
 - b) Reaction tube p. 9
 - c) Stirring control unit p. 10
 - d) Magnetic stirrer and tube rack p. 11
 - e) CalB immo screening kit p. 12
 - f) Lipase immo screening kit p. 13
 - g) ECR screening kit p. 14
3. **Support** p. 15

Products



MagRBR



Reaction tube



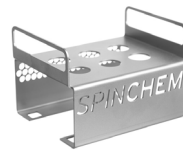
Magnetic tool



Stirring control unit

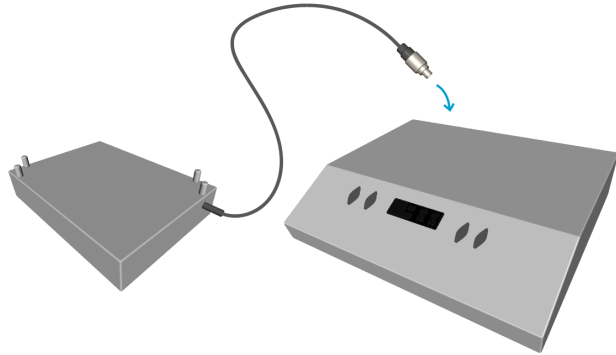


Magnetic stirrer

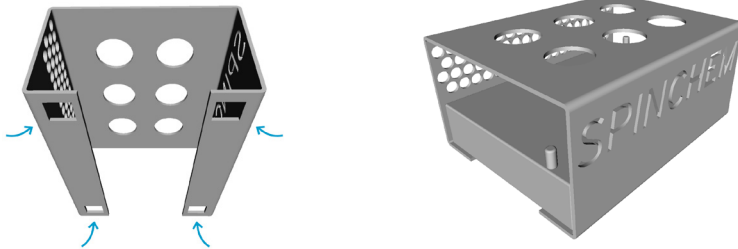


Tube rack

- 1 **Connect the magnetic stirrer device to the control unit**



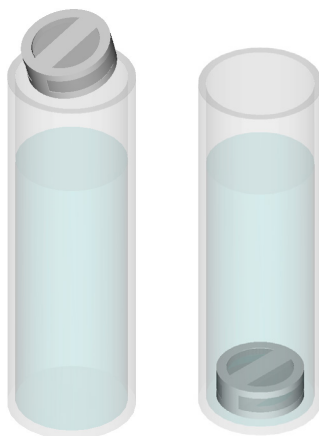
- 2 **Place the magnetic stirrer device into the tube rack**
Fit the rubber stands of the magnetic stirrer into the corresponding sockets of the tube rack



3 Fill the tube with solution

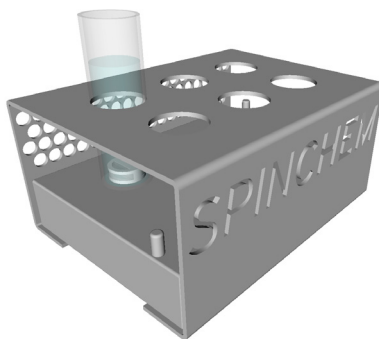


4 Add the MagRBR into the tube Make sure that the MagRBR is completely submerged in the solution, and that no bubbles are trapped inside

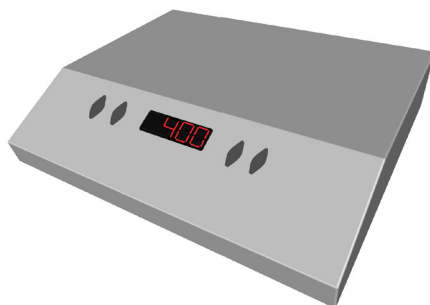


If bubbles are observed, gently tap the bottom of the tube containing the MagRBR against a flat surface to release the air

- 5** Put the tube into the tube rack



- 6** Start the magnetic stirrer device at a moderate speed (~400 rpm)
If a higher speed is required, increase the rpm when the MagRBR has stabilized

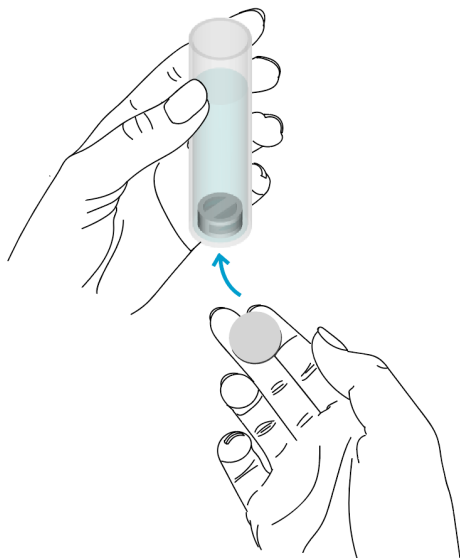


- 7** | **Samples are easily collected during or after the reaction span**



- 8** To remove the solution from the tube, place the magnetic tool at the bottom of the tube to secure the MagRBR inside, and pour the solution out

8.1

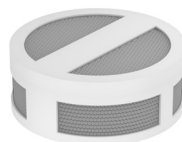


8.2



SpinChem® MagRBR M10

MagRBR in polyamide, pre-packed with solid resins for catalysis, immobilization and adsorption.



Properties

Material:	Polyamide (PA)
Diameter:	18 mm
Height:	7.3 mm
Weight:	1.8 g
Packed volume:	0.5 mL
Filter porosity:	44 µm
Speed:	300-1200 rpm
Liquid volume:	5-100 mL

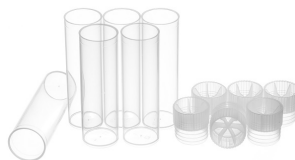
General chemical resistance*

Acids (strong)	Poor
Acids (weak)	Good-Poor
Alcohols	Good
Alkalis	Good
Aromatic hydrocarbons	Good-Fair
Halogens	Poor
Halogenated solvents	Good-Poor
Hydrocarbons and oils	Good
Organic solvents	Good
Oxidizing agents	Poor

*For more specific information, please contact SpinChem support at support@spinchem.com

SpinChem[®] reaction tube

Transparent, flat base tube in polypropylene for liquid volumes up to 23 mL. Cap included.



Properties

Material:	Polypropylene (PP)
Inner diameter:	21.5 mm
Outer diameter:	23.5 mm
Height:	75 mm
Weight:	7.5 g (5.5 g without cap)
Liquid volume:	23 mL

General chemical resistance*

Acids (strong)	Good-Poor
Acids (weak)	Good
Alcohols	Good
Alkalis	Good
Aromatic hydrocarbons	Good-Poor
Halogens	Poor
Halogenated solvents	Fair-Poor
Hydrocarbons and oils	Good-Fair
Organic solvents	Good-Poor
Oxidizing agents	Good-Fair

*For more specific information, please contact SpinChem support at support@spinchem.com

SpinChem[®] stirring drive control unit

3400-001

Control unit for magnetic stirrer, with four power settings (25%, 50%, 75%, 100%), and automatic memory function for last used settings.



Properties

Material (housing):	Stainless steel
Height:	38 mm
Width:	200 mm
Depth:	155 mm
Speed range:	100-2000 rpm
Input voltage:	100-240 VAC
Output voltage:	48 VDC
Frequency:	50-60 Hz
Electric current:	1.5 A
Stirring power:	10 W
Operational temperature:	0 to +40 °C

SpinChem[®] magnetic stirrer

3406-001

Waterproof magnetic stirrer, suitable for water baths, oil baths, incubators and ovens up to +50°C.



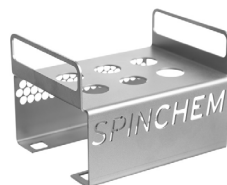
Properties

Material:	Stainless steel
Height:	26 mm
Width:	140 mm
Depth:	102 mm
Stirring points:	6 (2x3)
Stirring point distance:	39 mm
Operating voltage:	48 VDC
Stirring power:	10 W
Operational temperature:	-10 to +50 °C

SpinChem[®] tube rack

3406-101

Tube rack in stainless steel with sockets for docking the magnetic stirrer, and handles for lifting.



Properties

Material:	Stainless steel
Height:	67 mm
Width:	143 mm
Depth:	109 mm
Tube positions:	6 (2x3)

SpinChem® MagRBR M10, B1 kit



Purolite® Lifetech™ CaIB immo screening kit

5101-210

Contains six different resins with immobilized CaIB for biocatalyst screening. One MagRBR of each type. Store refrigerated.

B11

CaIB immo 8285:

Epoxy/butyl methacrylate, 100-710 μm , with Lipase from *Candida antarctica* B covalently immobilized, >10000 PLU/gdy

B12

CaIB immo 8806:

Octadecyl methacrylate, 300-710 μm , with Lipase from *Candida antarctica* B immobilized by adsorption, >10000 PLU/gdy

B13

CaIB immo 1090:

Styrene/DVB macroporus, 300-710 μm , with Lipase from *Candida antarctica* B immobilized by adsorption, >8000 PLU/gdy

B14

CaIB immo 5587:

Styrene/DVB macroporus, 300-710 μm , with Lipase from *Candida antarctica* B immobilized by adsorption, >4000 PLU/gdy

B15

CaIB immo 5872:

Styrene/DVB macroporus, 300-710 μm , with Lipase from *Candida antarctica* B immobilized by adsorption, >3500 PLU/gdy

B16

CaIB immo Plus™:

DVB/methacrylate macroporus, 300-710 μm , with Lipase from *Candida antarctica* B immobilized by adsorption, >9000 PLU/gdy

SpinChem® MagRBR M10, B2 kit



Purolite® Lifetech™ Lipase immo screening kit

5101-220

Contains resins with six different immobilized lipases for biocatalyst screening. One MagRBR of each type. Store refrigerated.

- B16 CalB immo Plus™:** DVB/methacrylate macroporus, 300-710 µm, with Lipase from *Candida antarctica* B immobilized by adsorption
- B21 CalA immo:** DVB/methacrylate macroporus, 300-710 µm, with Lipase from *Candida antarctica* A immobilized by adsorption
- B22 TL immo:** DVB/methacrylate macroporus, 300-710 µm, with Lipase from *Thermomyces lanuginosa* immobilized by adsorption
- B23 RM immo:** DVB/methacrylate macroporus, 300-710 µm, with Lipase from *Rhizomucor miehei* immobilized by adsorption
- B24 CR immo:** DVB/methacrylate macroporus, 300-710 µm, with Lipase from *Candida rugosa* immobilized by adsorption
- B25 PS immo:** DVB/methacrylate macroporus, 300-710 µm, with Lipase from *Pseudomonas cepacia* immobilized by adsorption

SpinChem® MagRBR M10, B3 kit



Purolite® Lifetech™ ECR screening kit

5101-230

Contains six different resins for enzyme immobilization screening. One MagRBR of each type. Store refrigerated.

- | | | |
|------------|------------------|---|
| B31 | ECR8204F: | Epoxy methacrylate macroporus, 150-300 μm , pore size 300-600 \AA , stable pH range 5-9 |
| B32 | ECR8309F: | Amino methacrylate macroporus, 150-300 μm , pore size 600-1200 \AA , stable pH range 3-10 |
| B33 | ECR8285: | Epoxy/butyl methacrylate macroporus, 100-710 μm , pore size 400-600 \AA , stable pH range 5-9 |
| B34 | ECR8806F: | Octadecyl methacrylate macroporus, 150-300 μm , pore size 500-700 \AA , stable pH range 2-10 |
| B35 | ECR1090M: | Polystyrenic macroporus, 300-710 μm , pore size 900-1100 \AA , stable pH range 1-14 |
| B36 | ECR1030M: | DVB/methacrylate macroporus, 300-710 μm , pore size 220-340 \AA , stable pH range 1-14 |

Please contact the SpinChem support team for any questions about our products or applications. You will have an answer within 24 hours.

support@spinchem.com

If you wish to learn more about us, visit our website at:

www.spinchem.com



SpinChem AB • Tvistevägen 48
SE-90736 • Umeå • Sweden
+46 (0)90 192 501 • info@spinchem.com
www.spinchem.com